



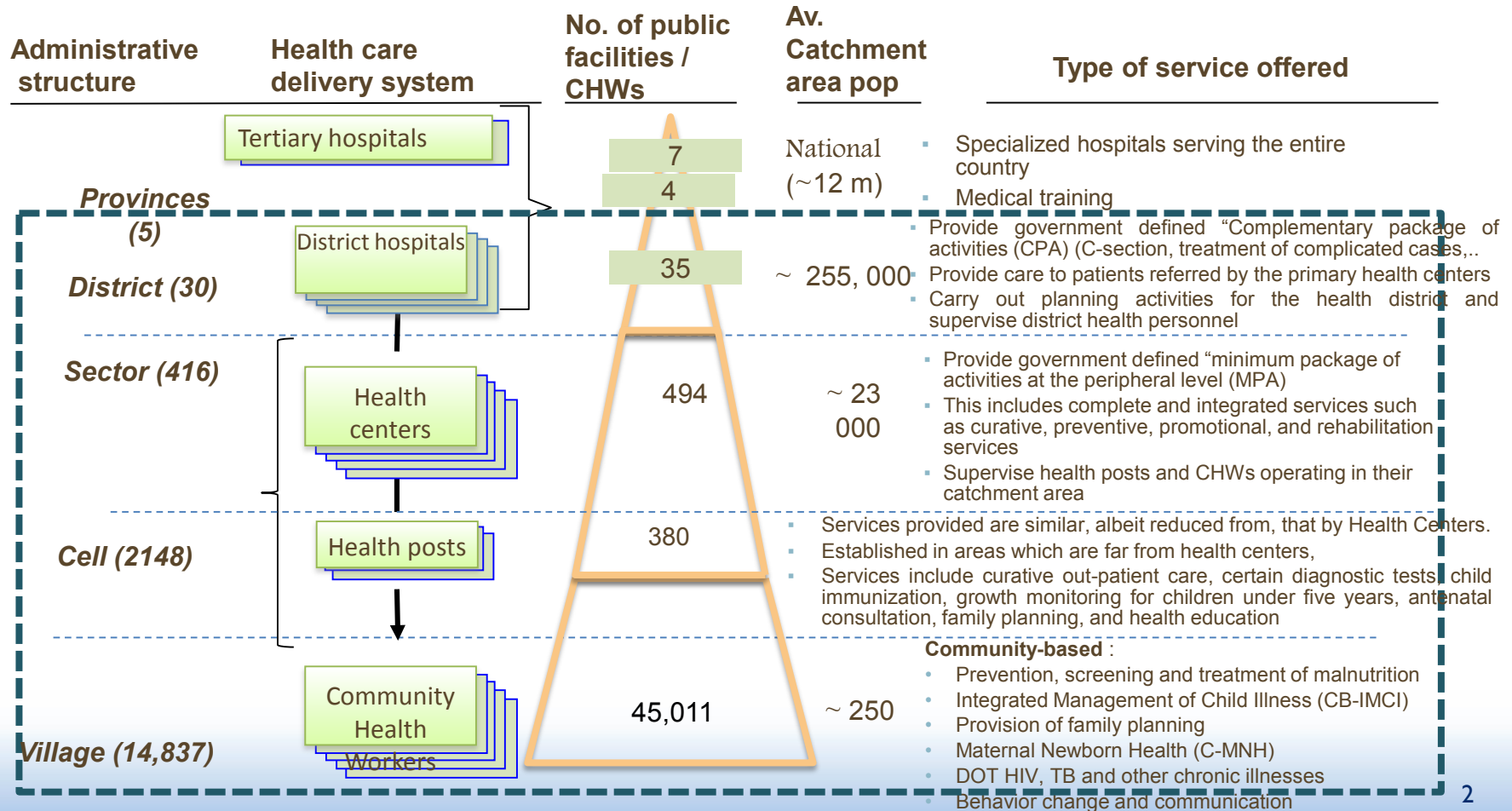
Advancing the PFP Agenda Building Partnerships to Meet Rwanda's FP2020 Commitments

Dr. Felix Sayinzoga (Director of Maternal, Child and Community Health Division, Rwanda Biomedical Center)

November 16, 2018

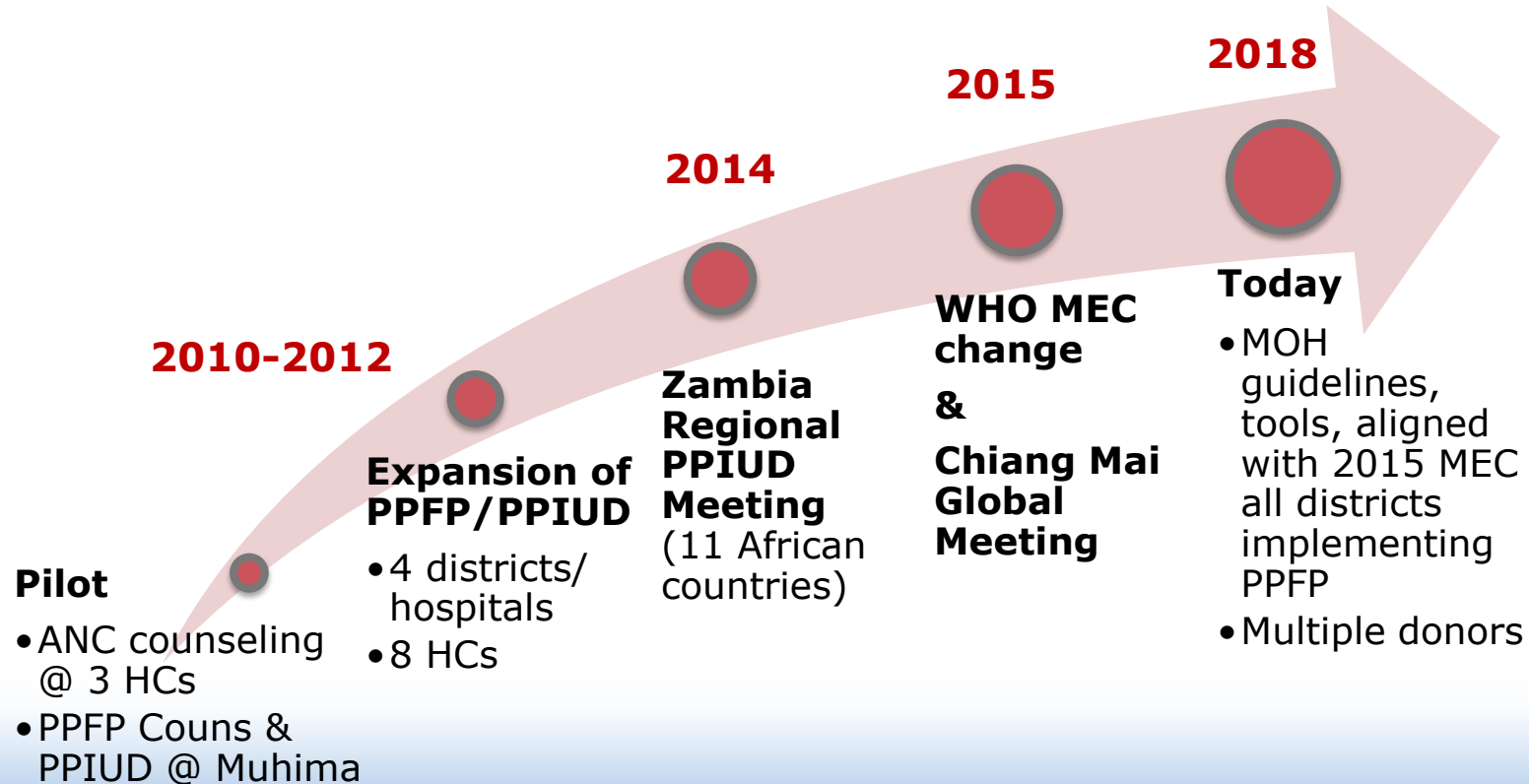


Rwanda's Health System



80% of burden of disease addressed at this level

History of expansion of PFP services in Rwanda



FAMILY PLANNING SUMMIT

11 JULY 2017 - LONDON

For Safer,
Healthier and
Empowered
Futures
#HerFuture



Total family
planning use
and prospective
unmet need
among women
0–23 months
postpartum

Summary of Commitments

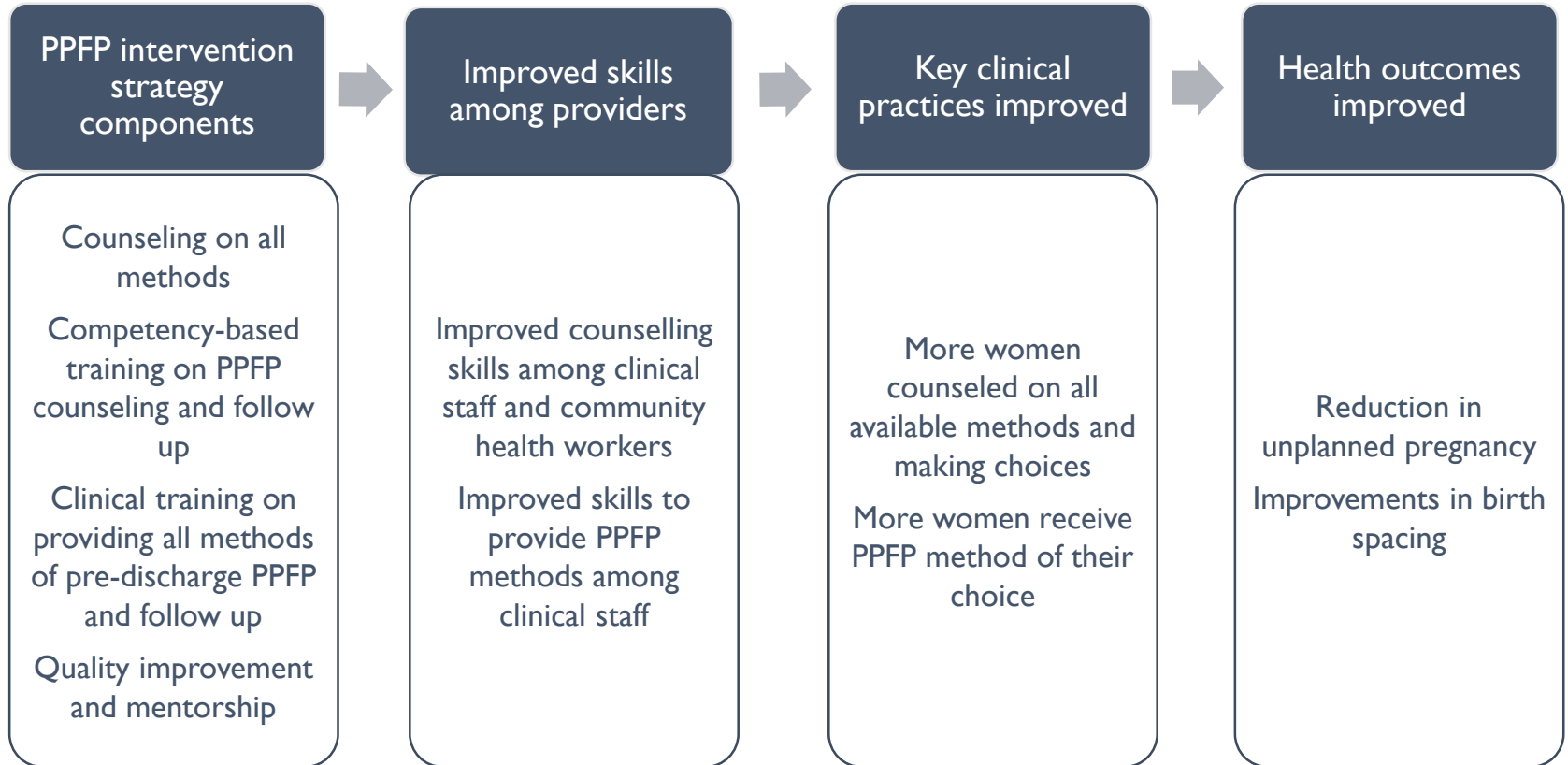
“The Government of Rwanda in collaboration with its partners and private sector commits to:

- Programming at scale postpartum family planning in health facilities by 2020
- By 2024, total demand for FP will have increased from 72% to 82%
- Improve its rights-based FP programming by adding to its available method mix long-acting and reversible methods
- Using the evidence base of high-impact practices to focus its FP programming resources for greatest impact by 2020.”

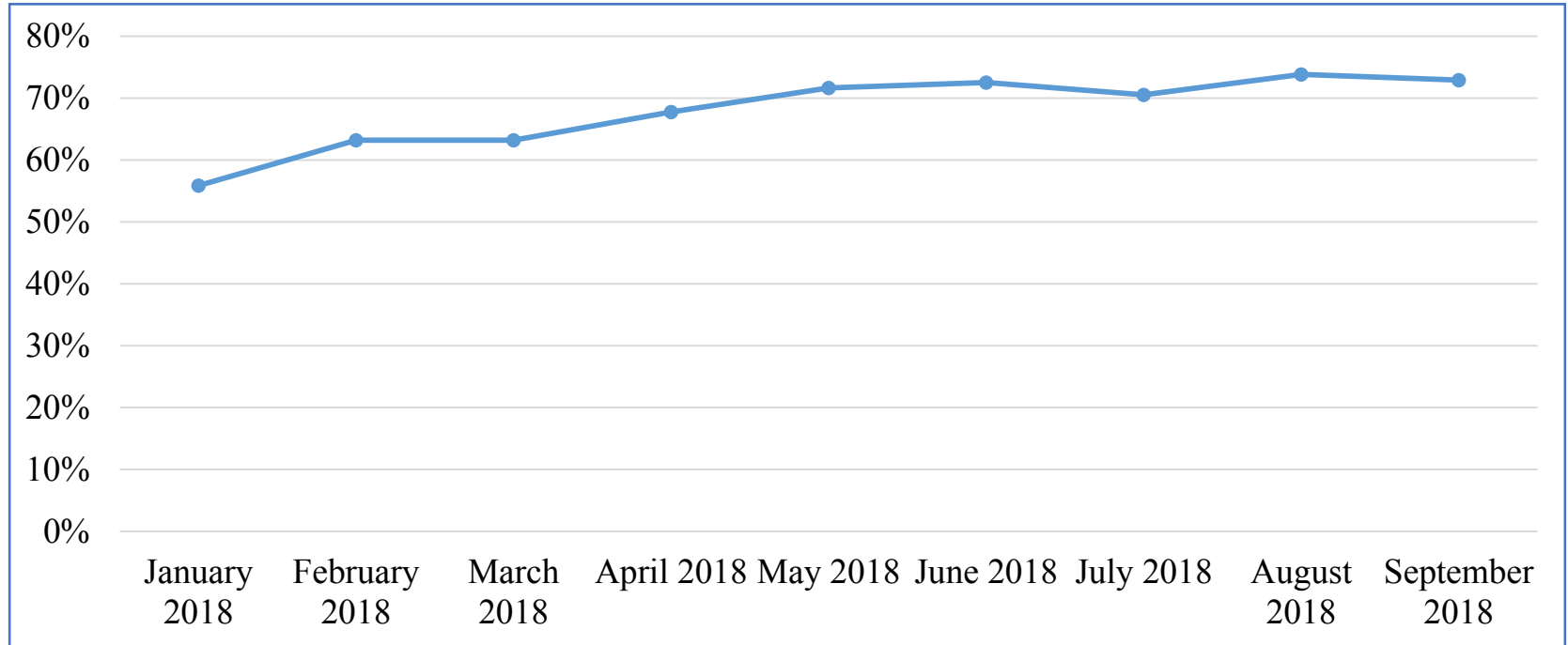
PPFP Scale Up Priorities

Priority	Status
Scale up of PPFP in all health facilities in Rwanda	PPFP is scaled up to facilities all districts
Review ongoing PPFP approach including the use of qualitative data to inform scale up/scale up PPFP interventions in all districts by training service providers	In progress (4 districts remained)
Ensure quality services through mentorship sessions	Ongoing
Determine a package of PPFP services to be integrated in Immunization and ANC, PNC services	Ongoing
Ensure that the two PPFP indicators are captured in the HMIS	Completed
Expand/scale up PPFP services in private health facilities of Kigali City	In progress

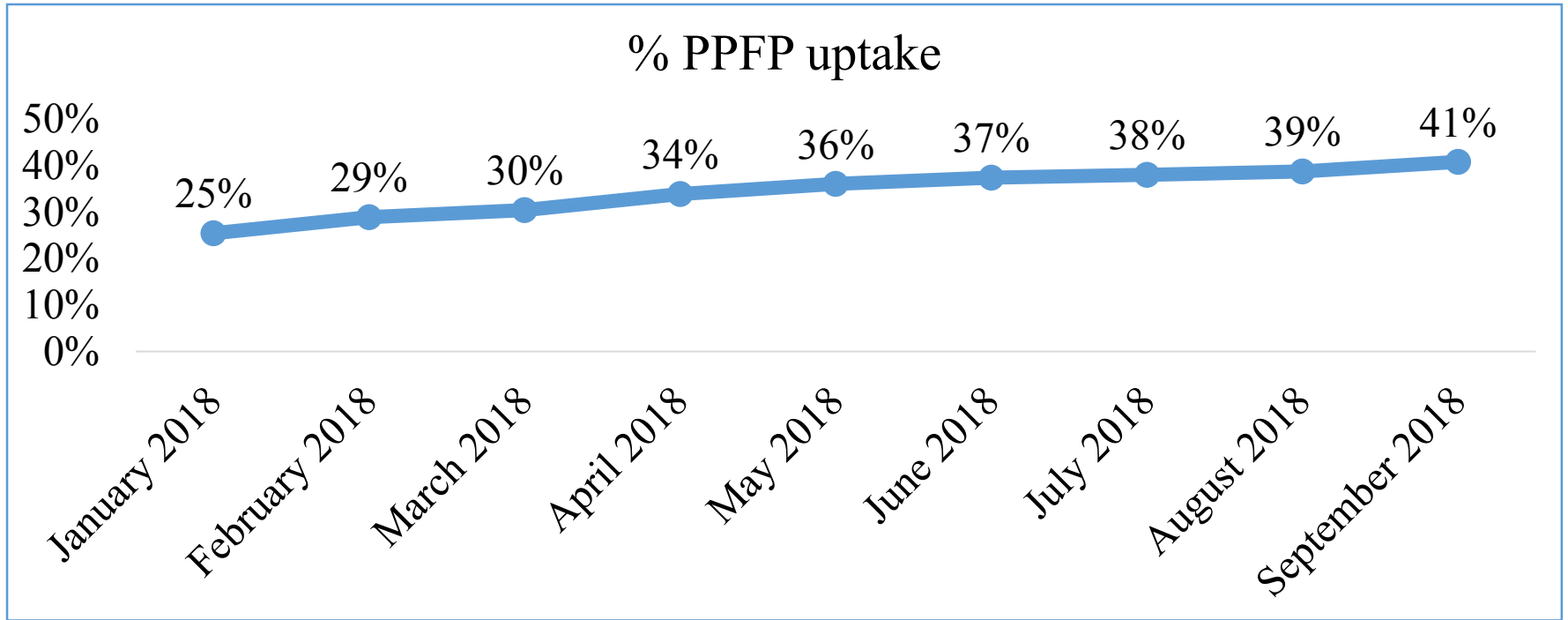
Immediate PFFP intervention goal and strategy



% ANC pregnant women counseled and selected PFP method



Trend of PFP uptake_Jan-Sep 2018



National average stands at 34%

Details per districts and hospitals

Rwanda Government Strategic Planning

Vision 2050

Development priorities

National Strategy for Transformation

Economic, social and governance priorities

Health Sector Strategic Plan 4 (2018-2024)

Health priorities

RMNCAH Policy

Policies and policy directions

Maternal, Newborn, Child
Health Strategic Plan

FP/ASRH
Strategic Plan

Population-based outcomes for

- ← Contraceptive use
- ← Teen pregnancies
- ← Maternal, child, neonatal mortality
- ← Demographic dividend

Introduction...

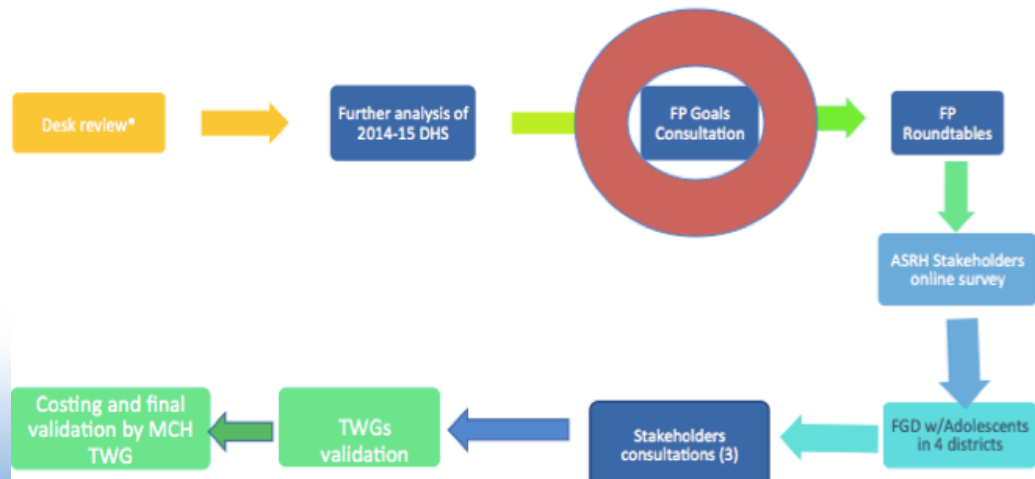
What we need to know when preparing a strategy

1. What growth is realistic in the next 5 years? What should our mCPR goal be?

2. What strategies and interventions can get us to our goal?

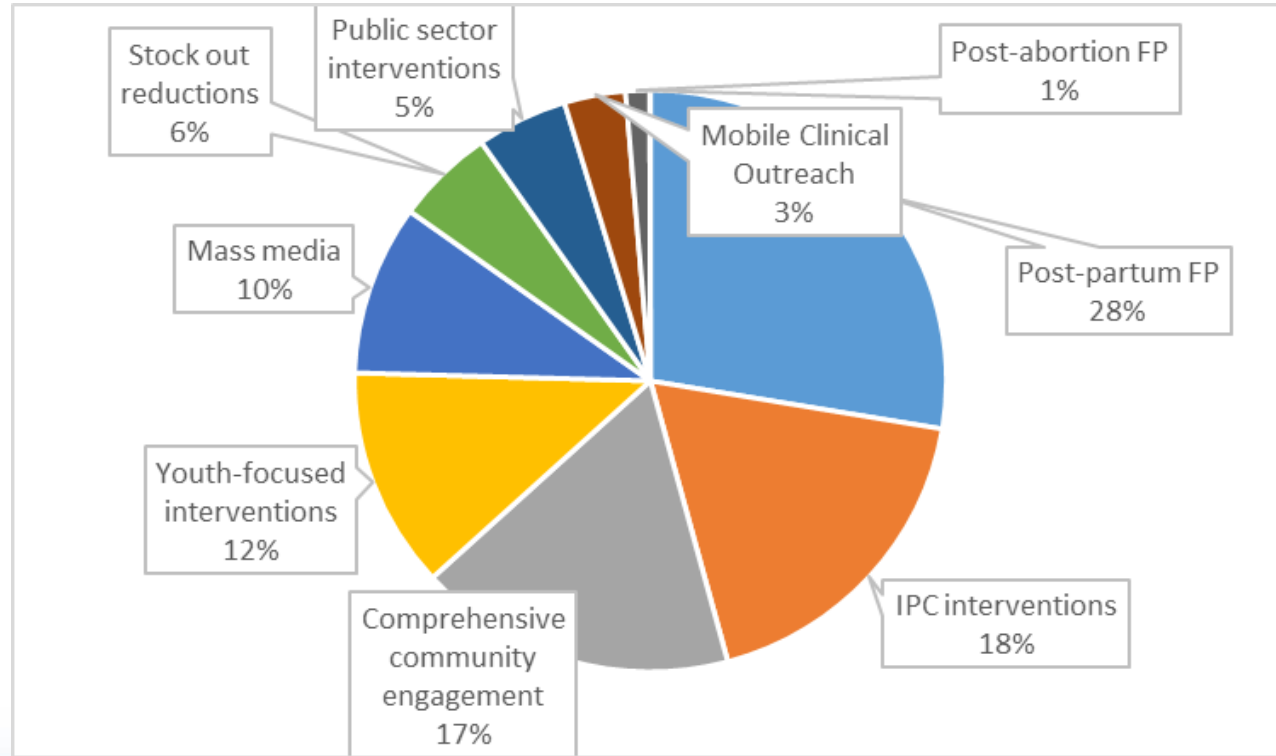


Steps taken for FP/ASRH strategic plan

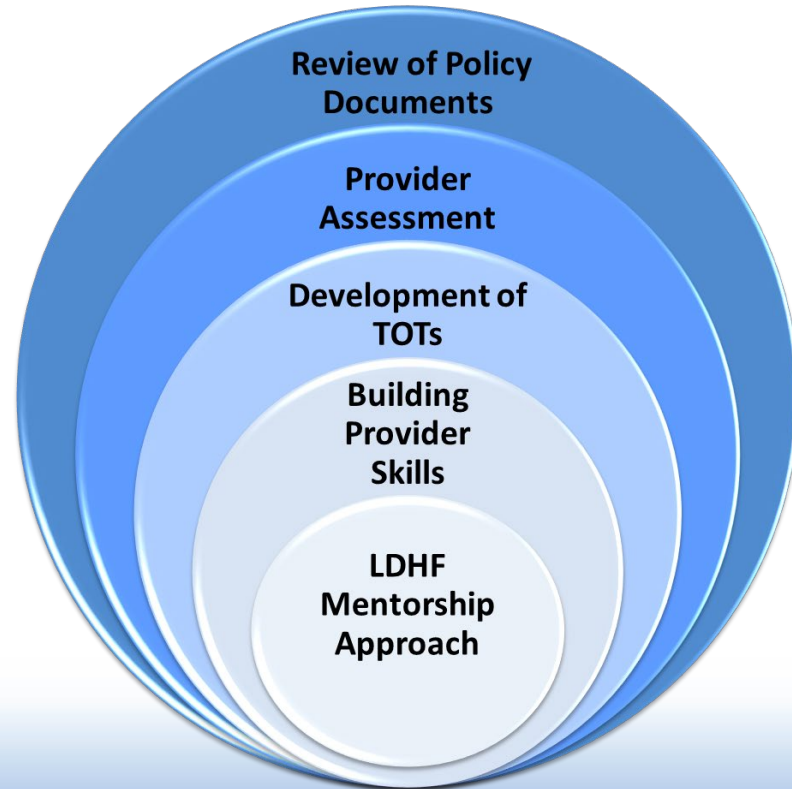


Results...: 2nd Scenario (CBD and New Method Excluded)

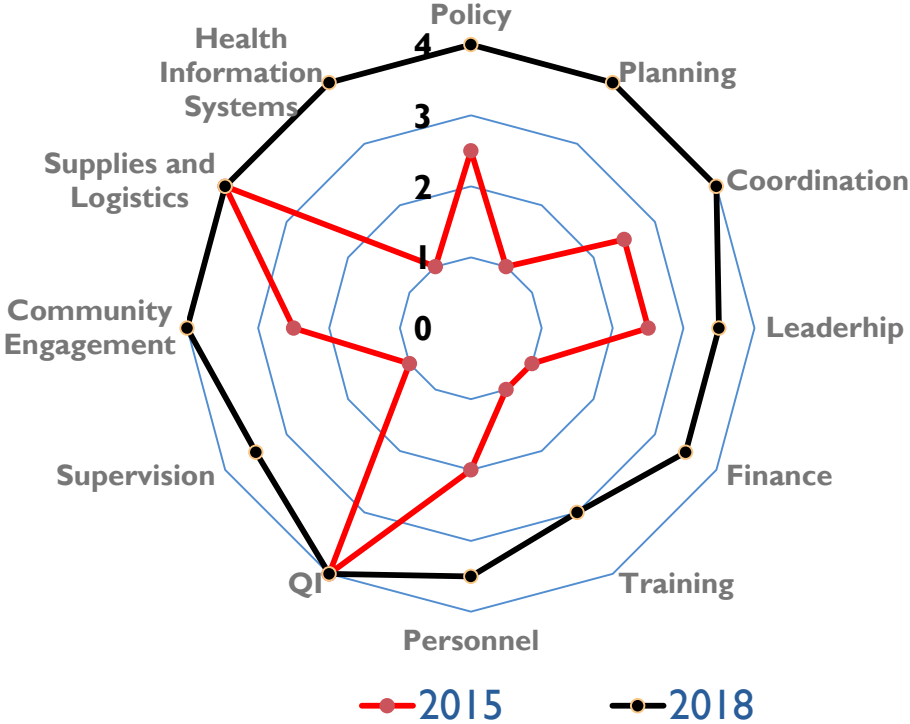
- Overall 14.4% total increase
- 2.9% per year
- PPF, Community engagement and IPC account for almost two-thirds of the gain



Capacity building approach went beyond training. Mentorship by local champions instrumental in results




Rwanda: Institutionalization of PFP



Strengthening Linkages Between Facility and Community

REPUBLICQUE DU RWANDA

PPFP



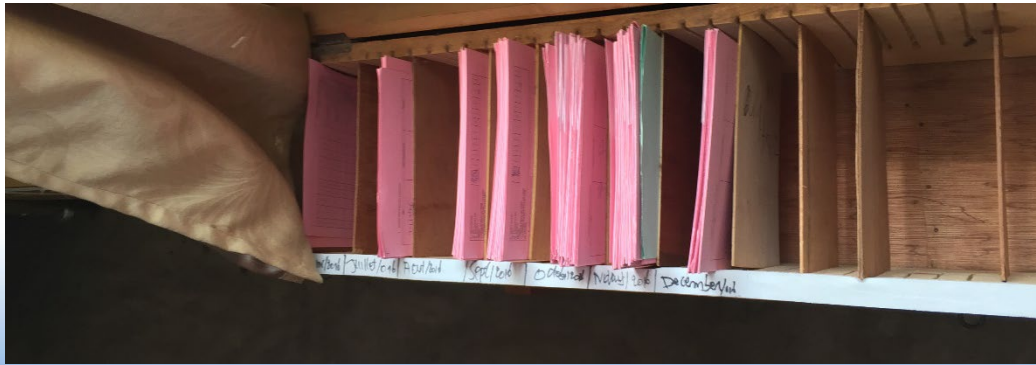
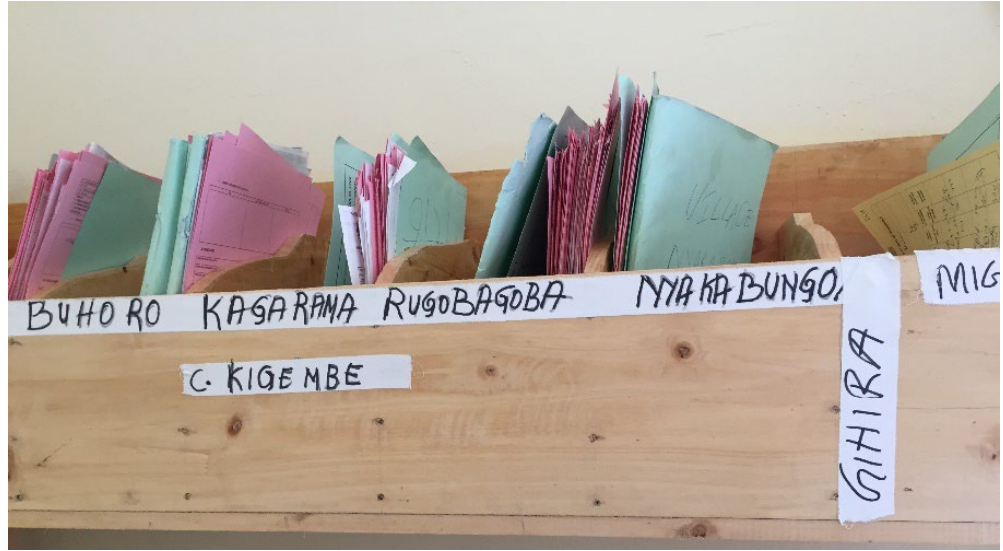
MINISTÈRE DE LA SANTE
B.P. 84 KIGALI

Nom de la Formation Sanitaire:

Nom du client/de la cliente:

N° de la Fiche de Consultation PF:

Date de la Revisite	Prescription	Prochain RDV	Date de Revisite	Prescription	Prochain RDV



Challenges and opportunities

Challenges:

- PFP in selected faith-based facilities
- Ensuring quality of FP counseling
- Unstable use of implanons

Opportunities:

- Strong political will
- National FP2020 Commitments
- Strong partnership
- District technical support
- High facility delivery rate, high coverage of use of immunization services in Rwanda
- Established Scale up management team

Thank you!